

Greater than, less than

Put one of these signs, <, >, =, between each pair of numbers.

- 1** 709 907 **3** 424 442 **5** 399 401
2 135 134 **4** 201 102 **6** 279 297

Write a number which lies between each pair.

Any number within the ranges shown here.

- 7** 365 370 **10** 123 132
8 990 992 **11** 699 705
9 501 511 **12** 550 555

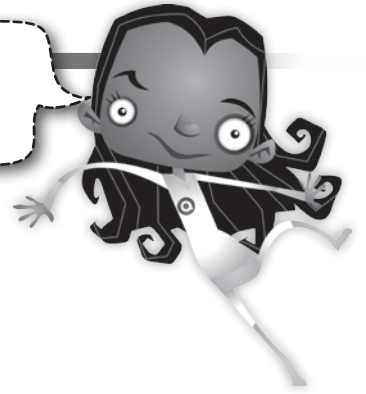
Adding and subtracting

Complete these additions and subtractions.

- 13** and
14 and
15 and
16 and

Pattern challenge!

Can you explain the pattern?



- 17 Compare the answers you wrote in each box for questions 14, 15 and 16.

What pattern do you notice?

The answers all end in 2 because they are all based on pairs of numbers with ones digits which give an answer of 12 ($8 + 4, 5 + 7, 3 + 9$) or of 2 ($8 - 6, 5 - 3, 3 - 1$)

I found this:



Easy



Challenging



I needed help